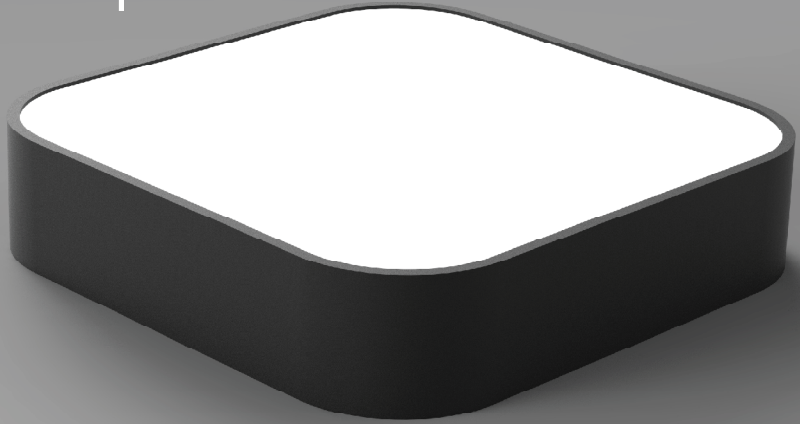




Concise LED Ceiling Lamp

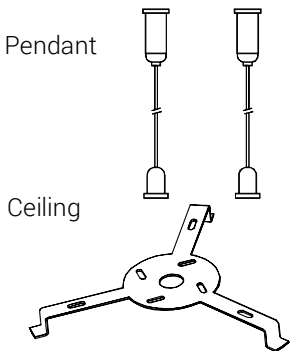
DL1089 Series



*Color temperature segment is adjustable

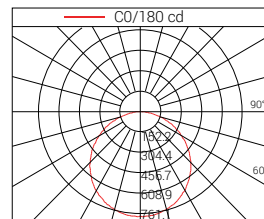
Finish : Sand White Sand Silver
 Sand Black

Accessories



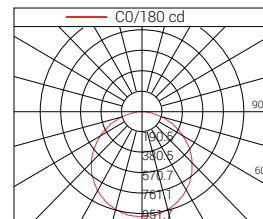
DL1089-10ES24W-D-120°

| Emax(lx) | Dia(cm) | m |
|----------|----------|---|
| 623.23 | Φ318.83 | 1 |
| 155.31 | Φ637.65 | 2 |
| 72.21 | Φ956.48 | 3 |
| 43.33 | Φ1275.31 | 4 |
| 29.17 | Φ1594.14 | 5 |



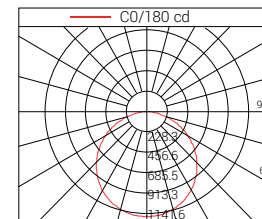
DL1089-12ES30W-D-120°

| Emax(lx) | Dia(cm) | m |
|----------|----------|---|
| 948.75 | Φ318.83 | 1 |
| 237.15 | Φ637.65 | 2 |
| 105.25 | Φ956.48 | 3 |
| 59.3 | Φ1275.31 | 4 |
| 37.95 | Φ1594.14 | 5 |



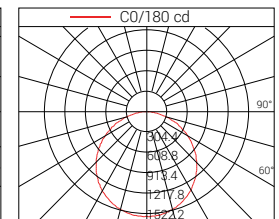
DL1089-14ES36W-D-120°

| Emax(lx) | Dia(cm) | m |
|----------|----------|---|
| 1138.15 | Φ318.83 | 1 |
| 284.25 | Φ637.65 | 2 |
| 126.95 | Φ956.48 | 3 |
| 71.16 | Φ1275.31 | 4 |
| 45.54 | Φ1594.14 | 5 |



DL1089-18ES48W-D-120°

| Emax(lx) | Dia(cm) | m |
|----------|----------|---|
| 1518.02 | Φ318.83 | 1 |
| 379.5 | Φ637.65 | 2 |
| 168.66 | Φ956.48 | 3 |
| 94.88 | Φ1275.31 | 4 |
| 60.72 | Φ1594.14 | 5 |



| Model No. | Input Voltage | Power | Lumen | LED QTY | P.F. | Driver | Size(mm) | Life Time | Price |
|------------------|--------------------|-------|--------|---------|------|--------|------------|------------|-------|
| DL1089-10ES24W-D | AC100~240V 50/60Hz | 24W | 2400lm | 144pcs | ≥0.9 | inside | 250x250x65 | 50,000 Hrs | \$ |
| DL1089-12ES30W-D | AC100~240V 50/60Hz | 30W | 3000lm | 180pcs | ≥0.9 | inside | 300x300x65 | 50,000 Hrs | \$ |
| DL1089-14ES36W-D | AC100~240V 50/60Hz | 36W | 3600lm | 216pcs | ≥0.9 | inside | 350x350x65 | 50,000 Hrs | \$ |
| DL1089-18ES48W-D | AC100~240V 50/60Hz | 48W | 4800lm | 288pcs | ≥0.9 | inside | 450x450x65 | 50,000 Hrs | \$ |